

# Setting Up RDP – Windows

## PURPOSE

How to set up Remote Desktop Protocol (RDP) to connect to the Cloud on a Windows computer. These instructions are for Pro Plus / Premier / Enterprise users.

### STEP 1

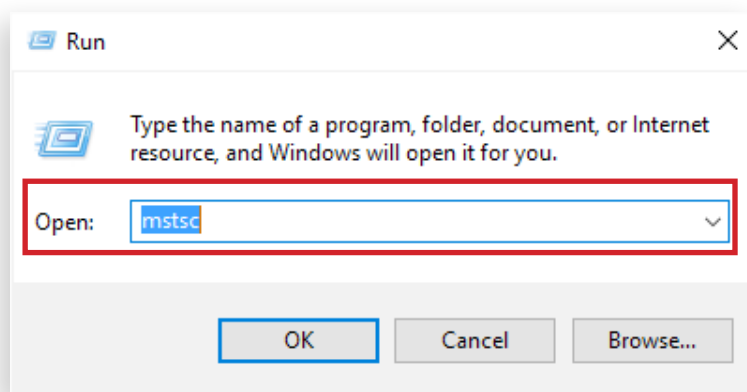
Press **WIN+R** to open the Run window.



*The Windows key (WIN) may appear as the Windows logo depending on the keyboard.*

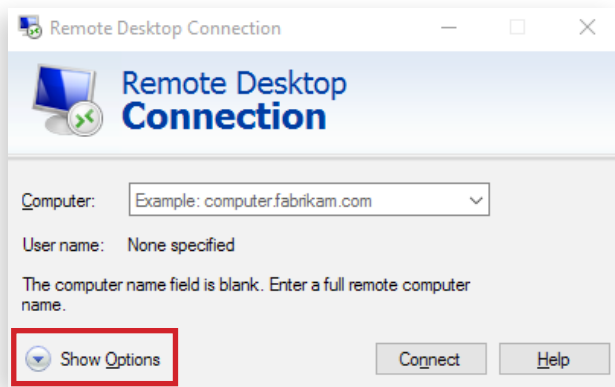
### STEP 2

Type “mstsc” & click **OK**.



**STEP 3**

Click **Show Options**.



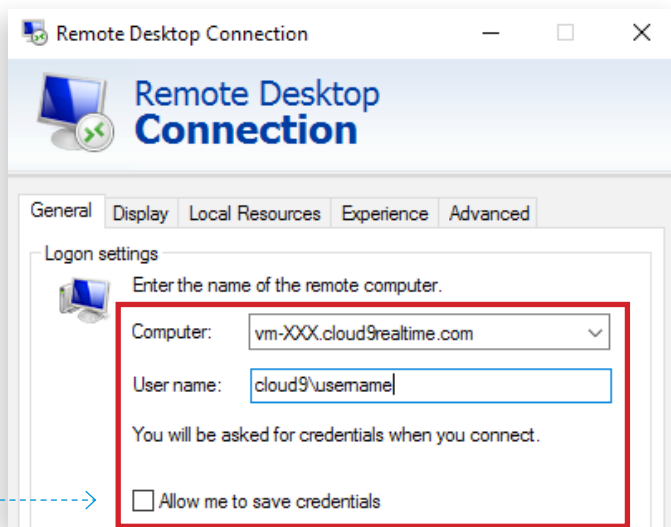
**STEP 4**

Enter your logon information:

- **Computer:** vm-**xxx**.cloud9realtime.com
- **User name:** Cloud9\**username**

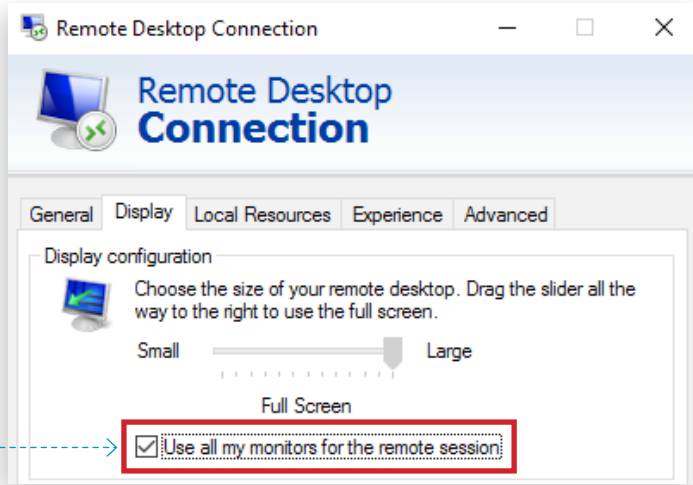
**STEP 5**

Mark the **Allow me to save credentials** checkbox.



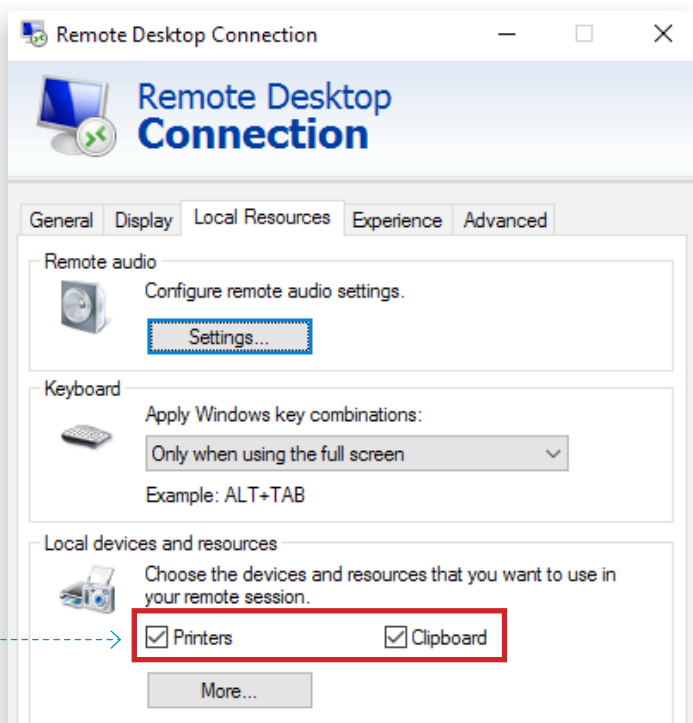
**STEP 6 - OPTIONAL**

Open the **Display** tab and mark the **Use all my monitors** checkbox.



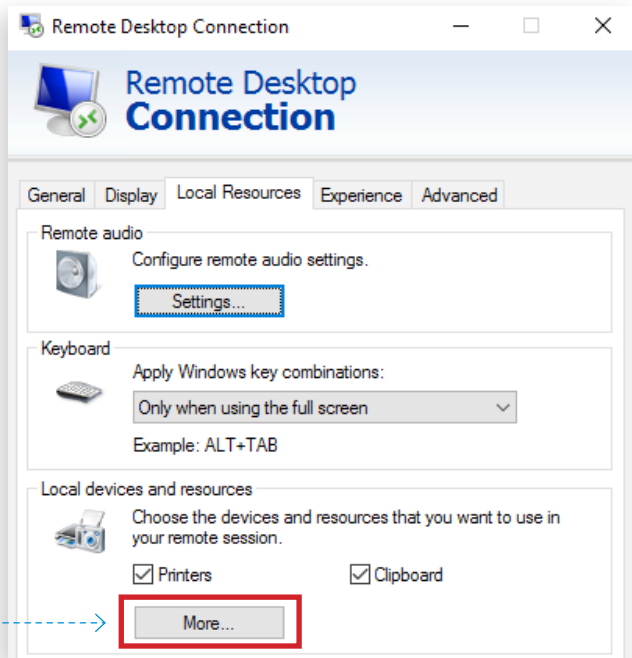
**STEP 7**

Open the **Local Resources** tab and verify both the **Printers** and **Clipboard** checkboxes are marked.



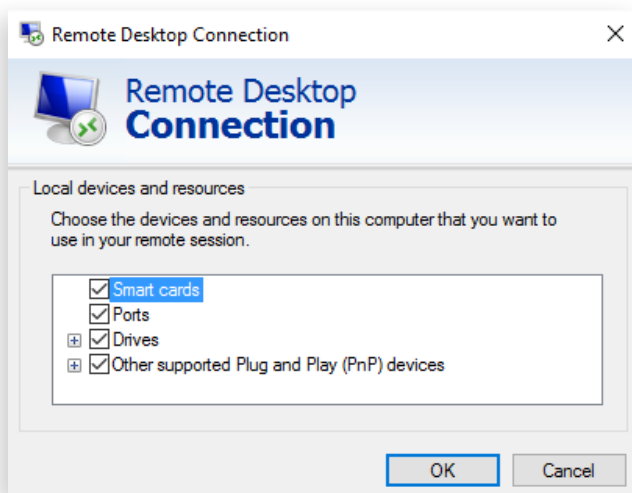
STEP 8

Click **More**.



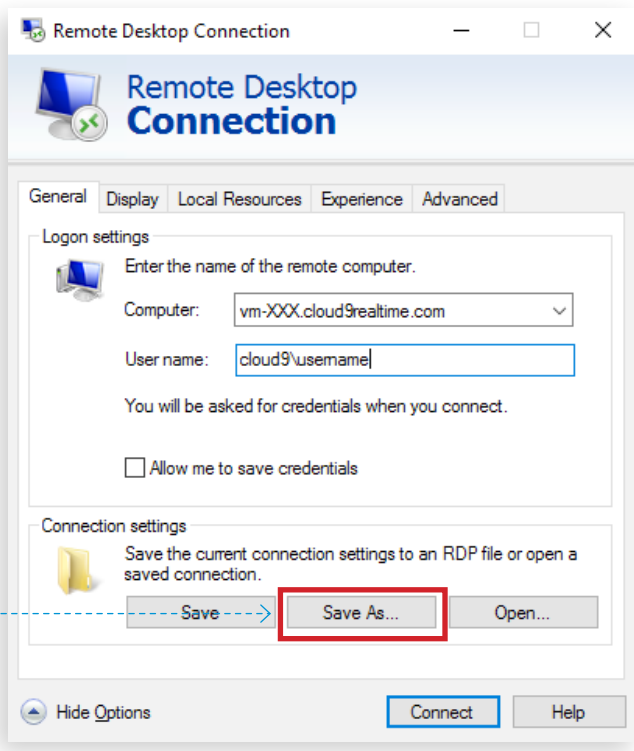
STEP 9

Mark the checkboxes for all your local resources and click **OK**.



**STEP 10**

Go back to the **General** tab and click **Save As**.



**STEP 11**

Name the RDP shortcut and save it to your desktop.

**STEP 12**

Click on the desktop icon to access your virtual server.

