

Setting Up RDP – Windows

PURPOSE

How to set up Remote Desktop Protocol (RDP) to connect to the Cloud on a Windows computer. These instructions are for Pro users.

STEP 1

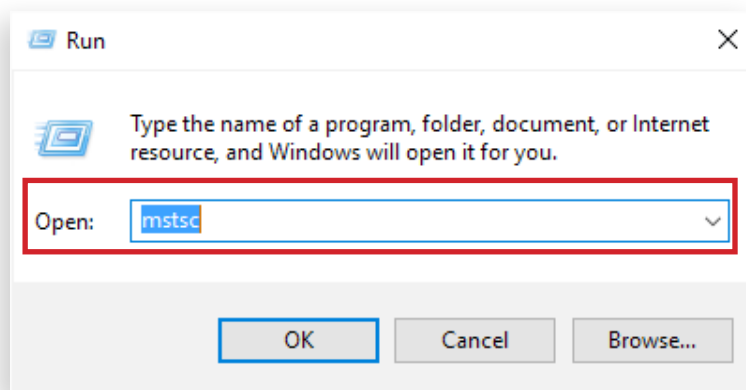
Press **WIN+R** to open the Run window.



The Windows key (WIN) may appear as the Windows logo depending on the keyboard.

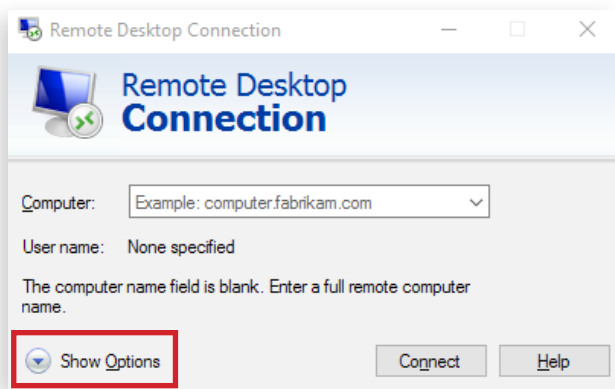
STEP 2

Type “mstsc” & click **OK**.



STEP 3

Click Show Options.



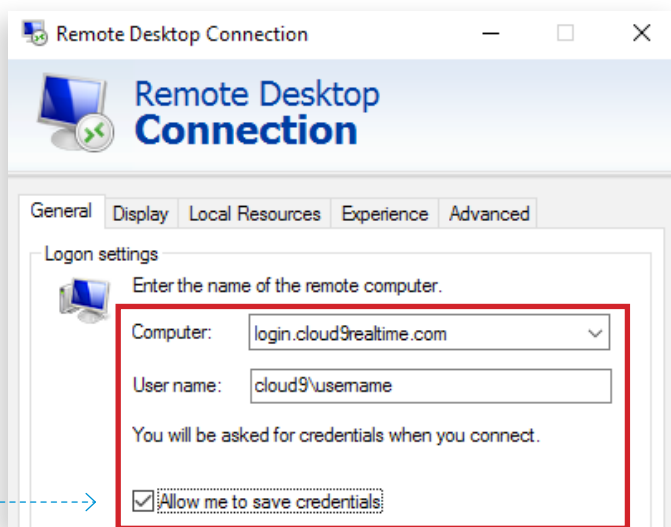
STEP 4

Enter your logon information:

- **Computer:** login.cloud9realtime.com
- **User name:** Cloud9\username

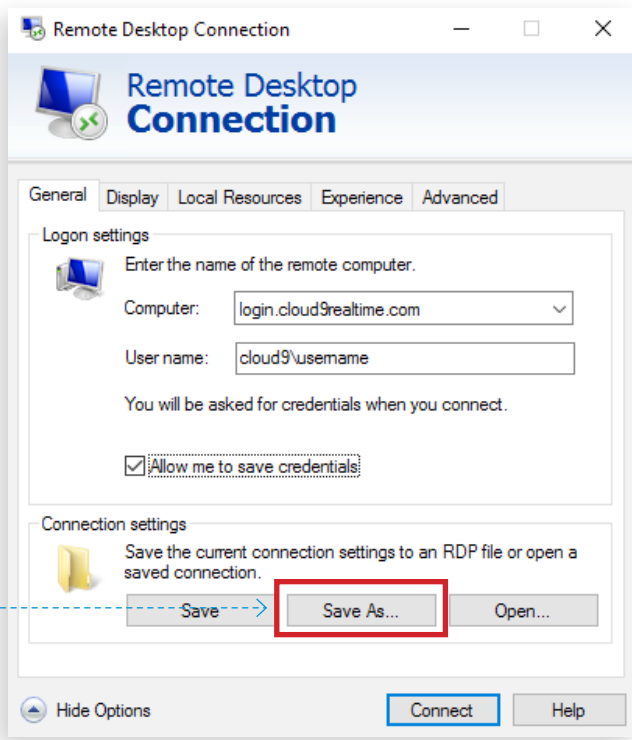
STEP 5

Mark the Allow me to save credentials checkbox.



STEP 6

Click **Save As**.



STEP 7

Name the RDP shortcut and save it to your desktop.

STEP 8

Double-click the RDP desktop icon.

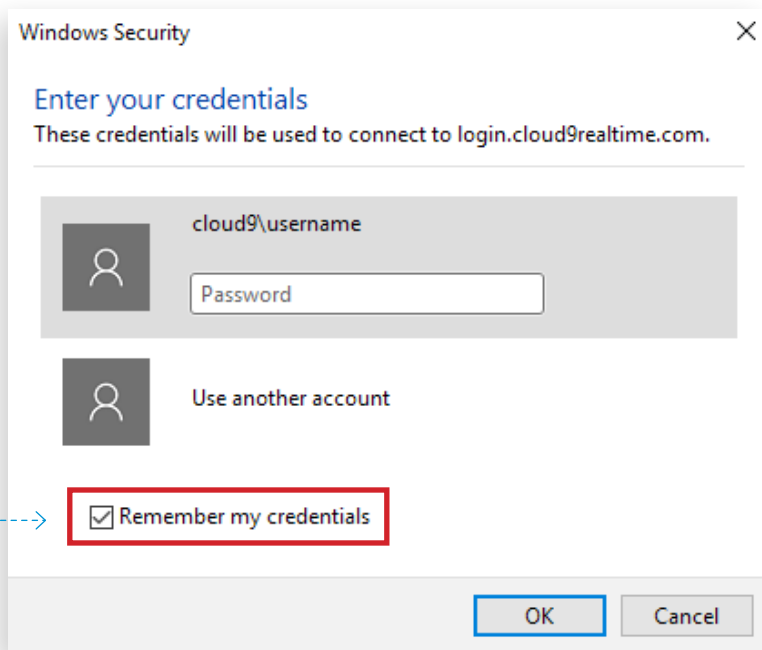


STEP 9

Enter your password.

STEP 10

Mark the **Remember my credentials** checkbox and click **OK**.



END OF DOCUMENT

