

Opening Port 7779

PURPOSE

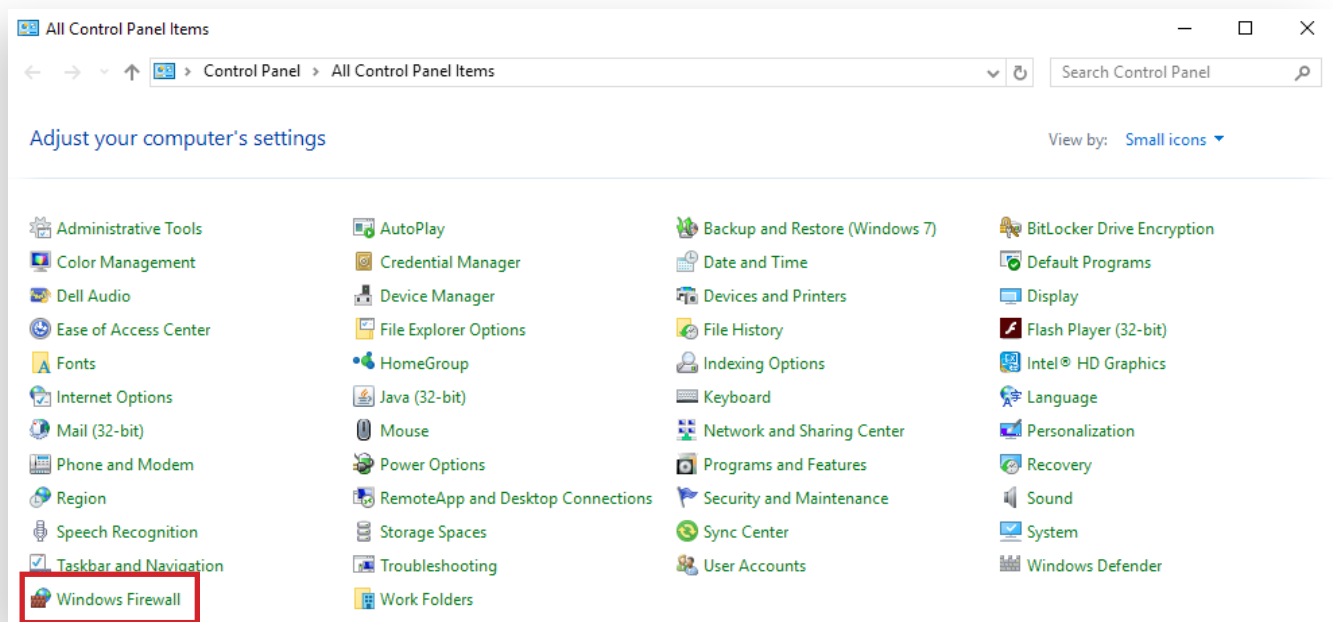
This document covers the steps for opening port 7779 on your local computer, which is necessary in order to access the C9 Portal.

STEP 1

Open the Control Panel.

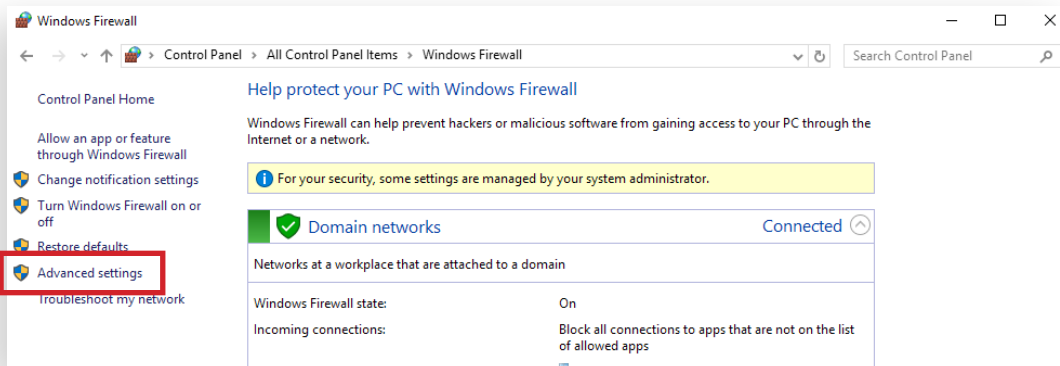
STEP 2

Click **Windows Firewall**.



STEP 3

Click Advanced Settings.

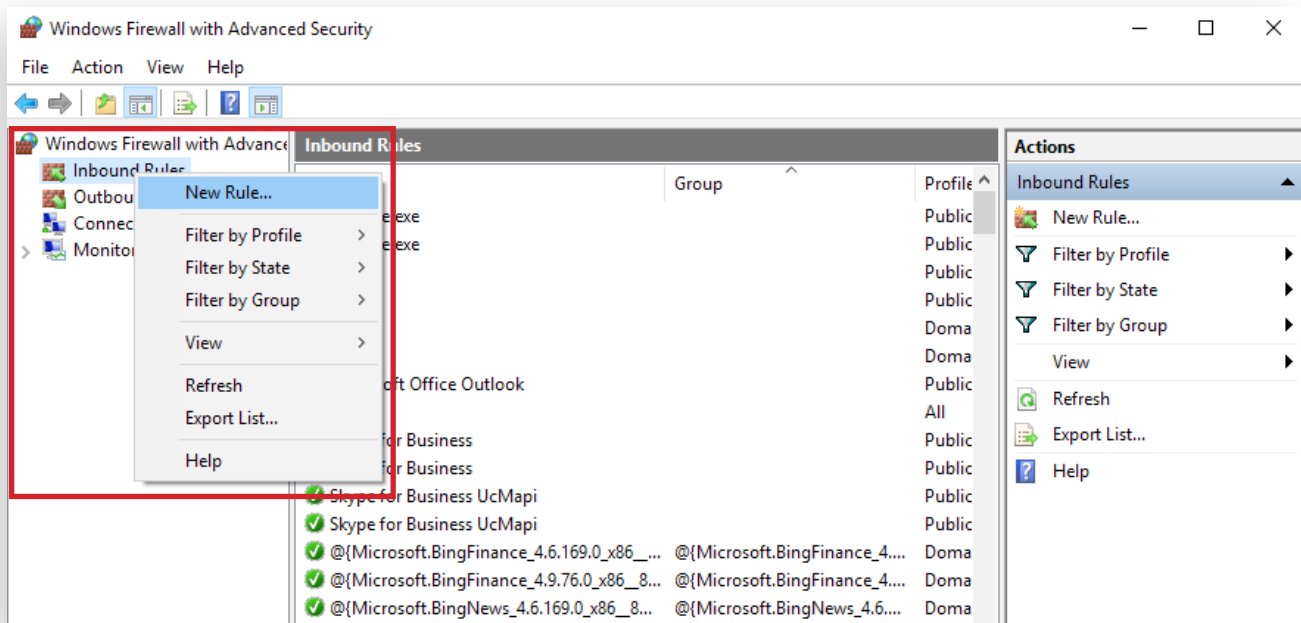


STEP 4

Click Inbound Rules.

STEP 5

Right-click Inbound Rules and select New Rule.



STEP 6

Select the **Port** radio button and click **Next**.

New Inbound Rule Wizard

Rule Type

Select the type of firewall rule to create.

Steps:

- Rule Type
- Protocol and Ports
- Action
- Profile
- Name

What type of rule would you like to create?

Program
Rule that controls connections for a program.

Port
Rule that controls connections for a TCP or UDP port.

Predefined:
AllJoyn Router
Rule that controls connections for a Windows experience.

Custom
Custom rule.

STEP 7

Enter “7779” in the Specified local ports field and click **Next**.

New Inbound Rule Wizard

Protocol and Ports

Specify the protocols and ports to which this rule applies.

Steps:

- Rule Type
- Protocol and Ports
- Action
- Profile
- Name

Does this rule apply to TCP or UDP?

TCP

UDP

Does this rule apply to all local ports or specific local ports?

All local ports

Specific local ports:
Example: 80, 443, 5000-5010

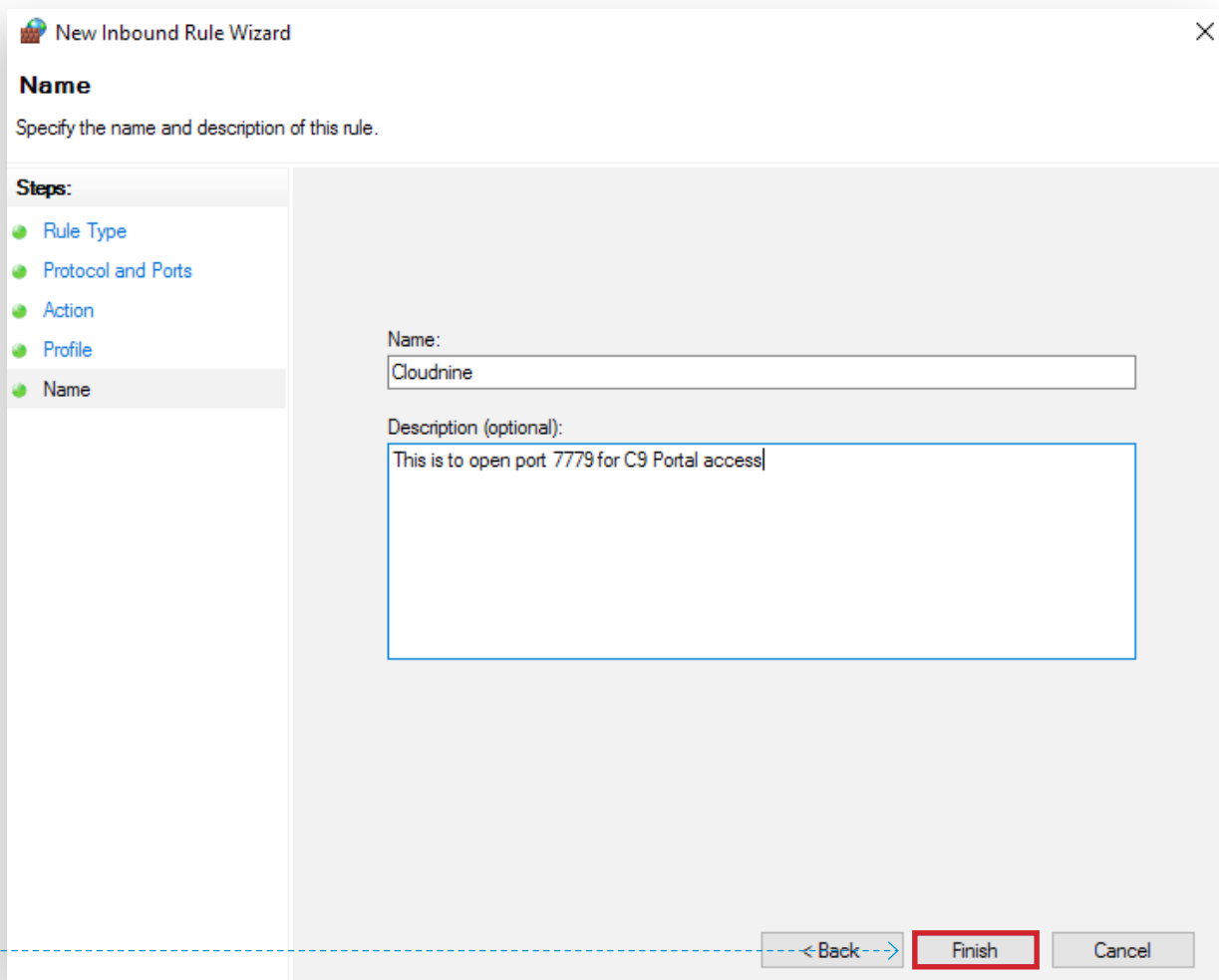


STEP 8

Click **Next** to skip through the Action and Profile screens.

STEP 9

Enter “Cloudnine” as the name and click **Finish**.



New Inbound Rule Wizard

Name
Specify the name and description of this rule.

Steps:

- Rule Type
- Protocol and Ports
- Action
- Profile
- Name**

Name:
Cloudnine

Description (optional):
This is to open port 7779 for C9 Portal access

< Back **Finish** Cancel

END OF DOCUMENT

